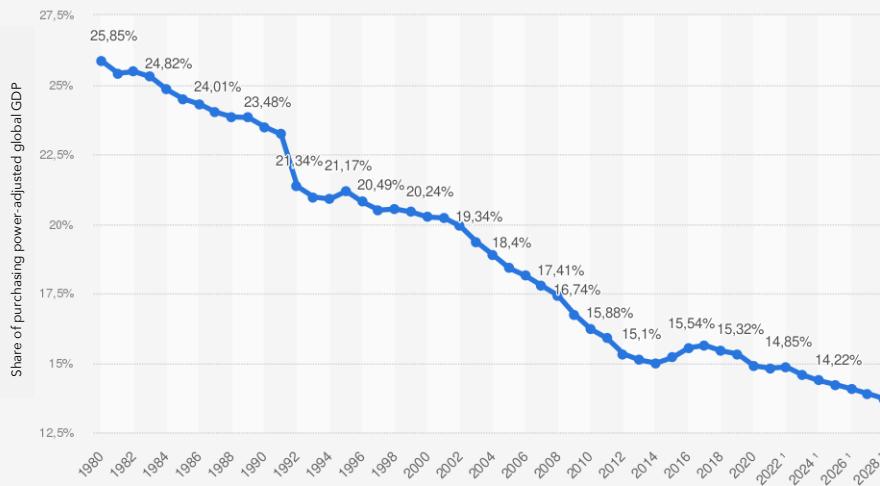


Europe in a world of change

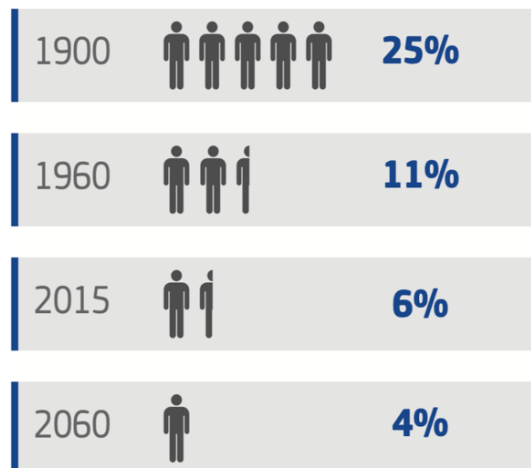
EU: Share of purchasing power-adjusted global GDP from 1980 to 2022 and forecasts to 2028



Source: IMF World Economic Outlook Database, 2023

GDP (gross domestic product):
GDP indicates the total value of all products and services generated by a country within a year.

Europe's share of the global population is declining



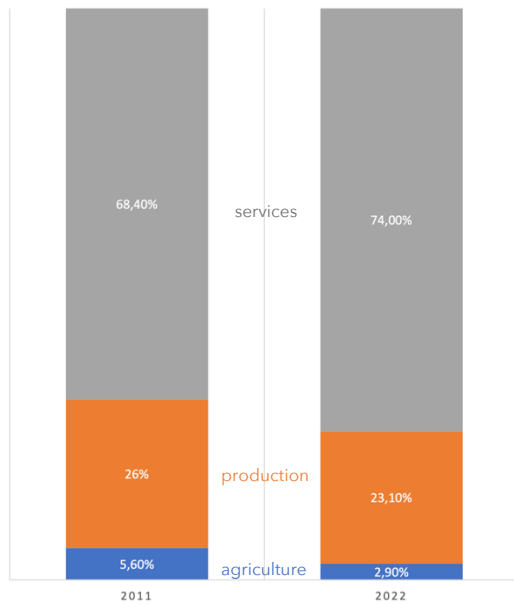
Source: Statistical Service UN/ Eurostat EU-27

Work assignment:

1. Understand and discuss the graphics in the group!
2. In the end, one person briefly presents your findings on the following questions:
 - What is the key message of the graphics? How do the graphics relate to each other?
 - What could be the consequences of the development shown for Europe?

Fundamental Change in Economy

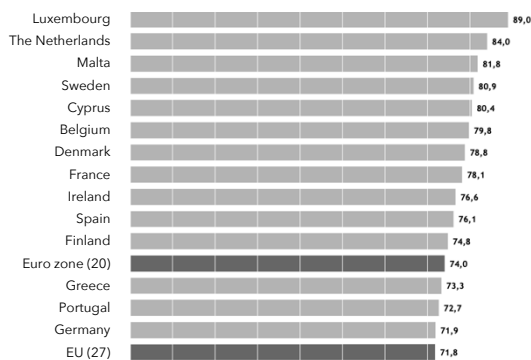
Distribution of employed persons in the EU by economic sector



Source: International Labor Organization/ Austrian Federal Economic Chamber (own translation)

Employees in the service sector in an EU comparison

employment shares 2022 in %



Source: Austrian Federal Economic Chamber (own translation)

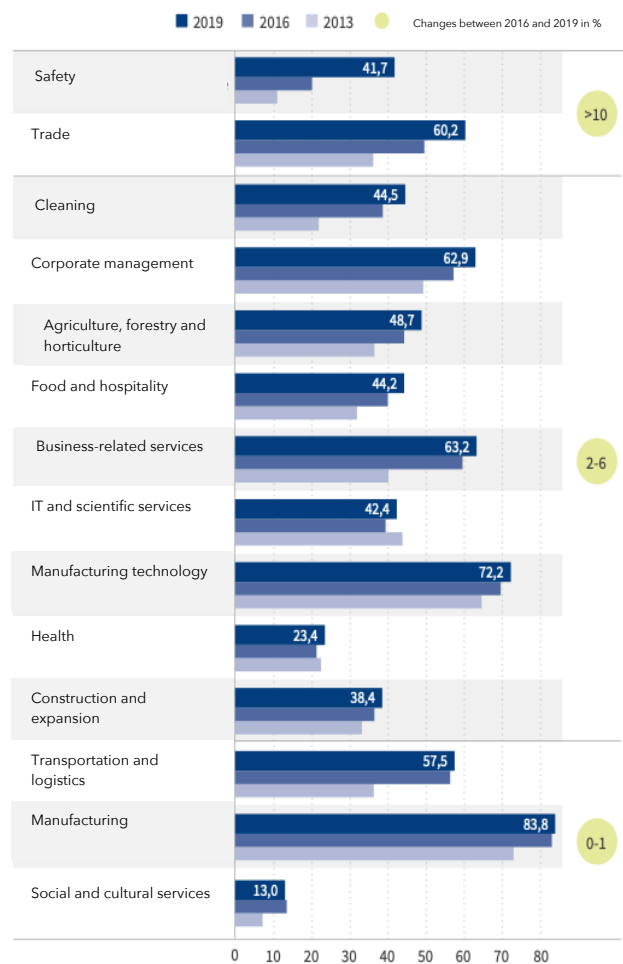
Services differ as "intangible goods" from the production of goods, in which tangible goods are produced.

Substitutability:

Substitutability is something that is replaceable or interchangeable. With digitalization, for example, more and more professions are being replaced by machines and robots.

Substitutability potential by occupational segment

Proportion of jobs that could potentially be performed by computers (in percent), sorted by the extent of change between 2016 and 2019



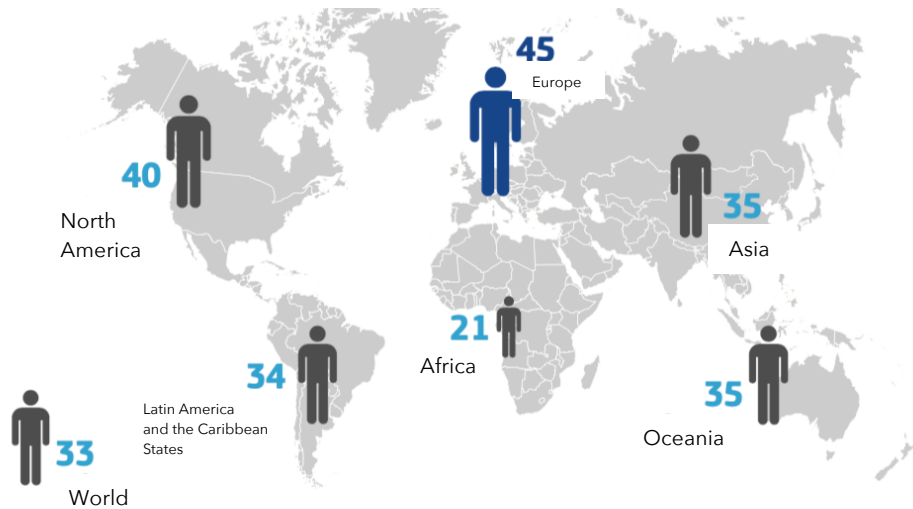
Source: Institute for labor market and occupational research (own translation)

Work assignment:

1. Understand and discuss the graphics in the group!
2. At the end, one person briefly presents your findings on the following questions:
 - What is the core message of the graphics? How do the graphics relate to each other?
 - What could be the consequences of the development shown for Europe?

Fundamental Changes in Society

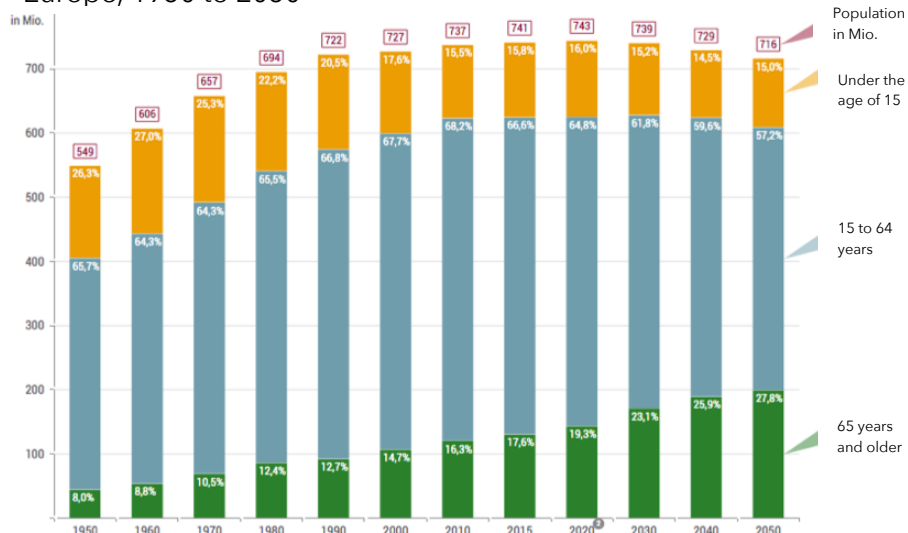
Europe will have the oldest population in the world by 2030
(Average age by region of the world)



Source: Rand Europe

Age structure and population development

Share of age groups in percent, population status in absolute figures, Europe, 1950 to 2050

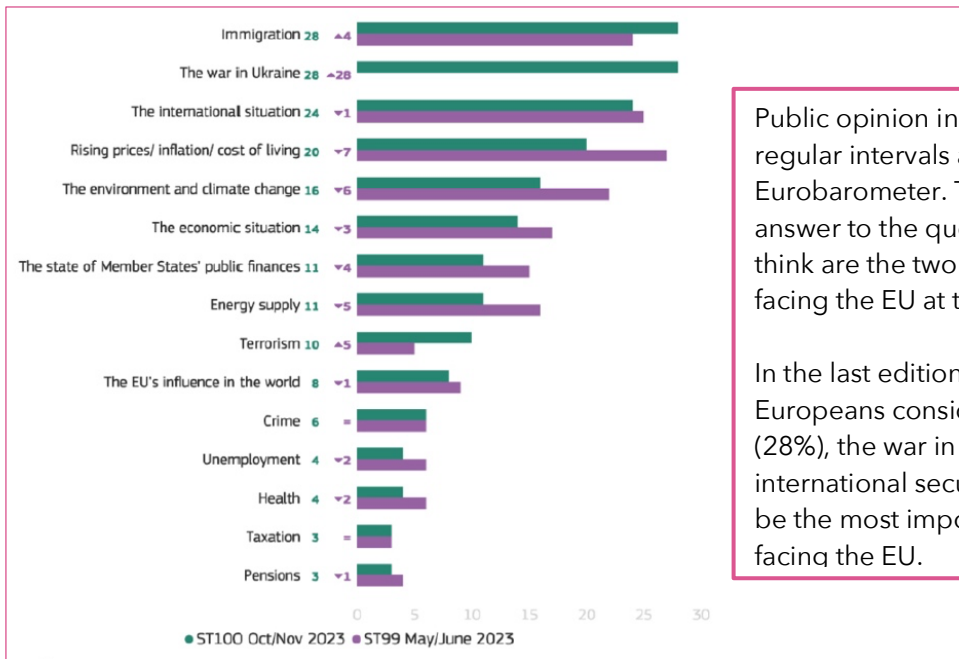


Quelle: United Nations – Department of Economic and Social Affairs, Population Division (2017), World Population Prospects: The 2017 Revision
Lizenz: cc by-nc-nd/3.0/de/

Work assignment:

1. Understand and discuss the graphics in the group!
2. At the end, one person briefly presents your findings on the following questions:
 - What is the core message of the graphics? How do the graphics relate to each other?
 - What could be the consequences of the development shown for Europe?

What concerns us the most?

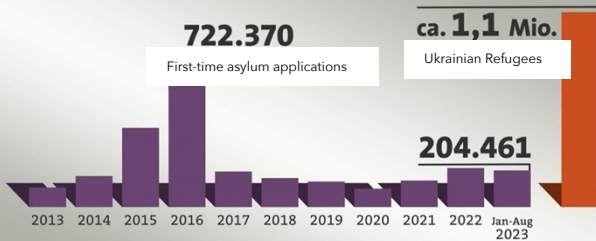


Public opinion in the EU is surveyed at regular intervals as part of the Eurobarometer. The graph shows the answer to the question "What do you think are the two most important issues facing the EU at the moment?".

In the last edition (fall 2023), many Europeans considered immigration (28%), the war in Ukraine (26%) and the international security situation (24%) to be the most important challenges facing the EU.

Source: Eurobarometer

People seeking protection in Germany

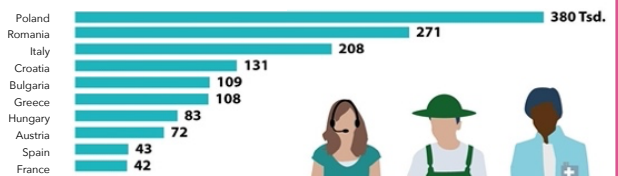


Source: Federal Office for Migration and Refugees/ Integration Media Service

Arrival for work

Most immigrant workers came to Germany from these countries (2021)

In total 1,65 Mio from EU-countries:



In total 295,000 from Non-EU-countries:



Source: Federal Statistical Office/ Central Register of Foreigners

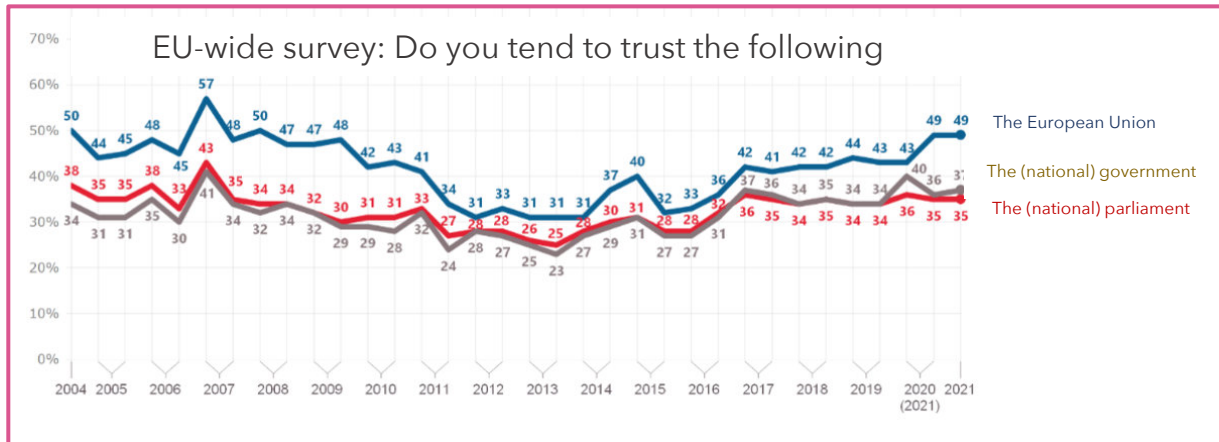


015543 Globus

Work assignment:

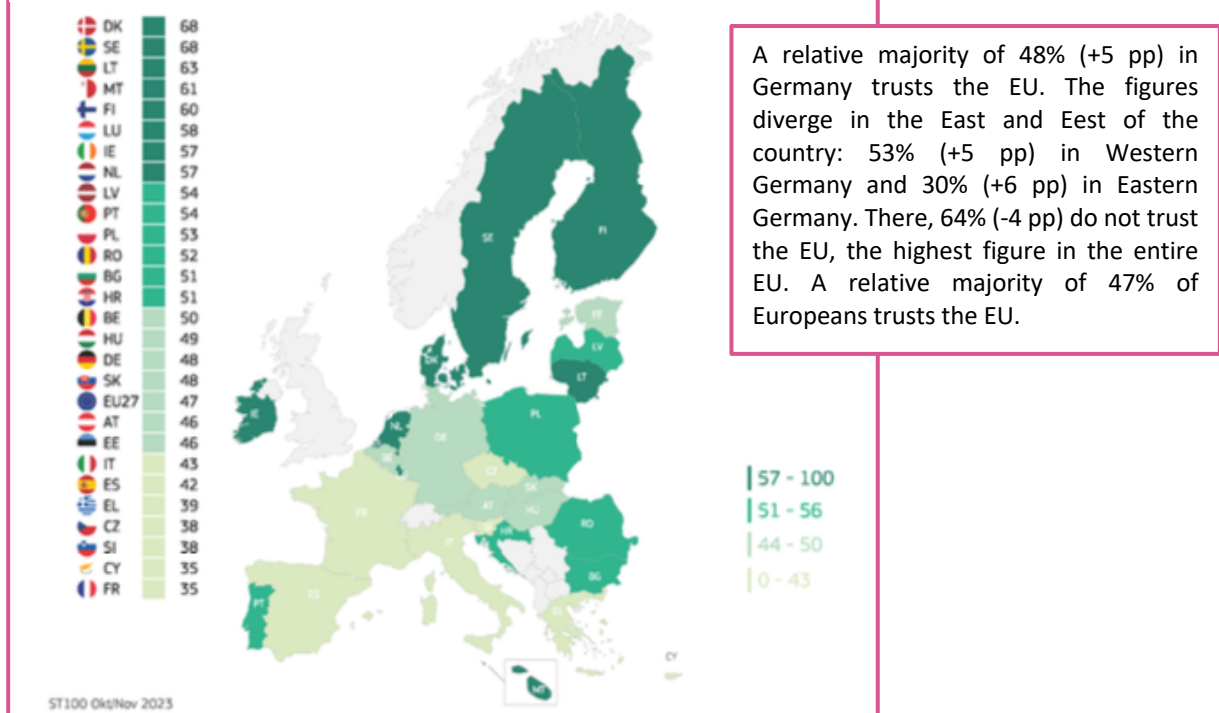
1. Understand and discuss the graphics in the group!
2. At the end, one person briefly presents your findings on the following questions:
 - What is the core message of the graphics? How do the graphics relate to each other?
 - What could be the consequences of the development shown for Europe?

A question of trust and legitimacy



Source: The Federal Agency for Civic Education Baden-Wuerttemberg

QA6.4 For the following institutions, please indicate whether you tend to trust them or not. What about ...? The European Union - rather trust (%)



Source: Eurobarometer/ European Parliament

Work assignment:


1. Understand and discuss the graphics in the group!
2. At the end, one person briefly presents your findings on the following questions:
 - What is the core message of the graphics? How do the graphics relate to each other?
 - What could be the consequences of the development shown for Europe?

THE IMPACT OF CLIMATE CHANGE ON EUROPE

Arctic

-  Temperature increases much more than the global average
Less ice covers the Arctic sea
Less ice covers Greenland
Fewer permafrost areas
Higher risk of biodiversity loss
-  Some new opportunities for exploiting natural resources and transporting by sea
-  Risks to the livelihoods of local people

Boreal region

-  More heavy rain
Less snow and ice
More rain and river flows
Forests grow faster and more risk of forest pests
Winter storms become more damaging
-  Higher crop yields
Less energy needed for heating
More opportunities to use hydropower
More summer tourism

Mountain areas



-  Temperature increases more than the European average
Fewer and smaller glaciers
Plants and animals will move to a higher altitude
High risk of species extinction
Higher risk of forest pests
Higher risk of rock falls and landslides
Hydropower could be affected
-  Less ski tourism

Mediterranean region

-  More heat extremes
Less rain and river flows
Higher risk of droughts
Higher risk of biodiversity loss
Higher risk of forest fires
-  More competition for water
More water needed for agriculture
Lower crop yields
Livestock production becomes more difficult
Producing energy becomes more difficult
More energy needed for cooling
Less tourism in summer, but possibly more in other seasons
Most economic sectors negatively affected
Very vulnerable to the spillover effects of climate change outside Europe
-  More people die because of heat waves
More areas where people can catch diseases from insect bites



Atlantic region

-  More heavy rain
Higher river flow
Higher risk of flooding
Higher risk of damage due to storms in winter
More bad weather
-  Less energy needed for heating

Continental region

-  More weather extremes
Less rain in summer
Higher risk of river floods
Higher risk of forest fires
-  Forests become less valuable
More energy needed for cooling

Coastal regions and seas

-  Higher sea surface temperatures
Ocean becomes more acidic
Marine species migrate north
Changes in phytoplankton communities
More marine dead zones
-  Risks and some opportunities for fisheries
-  Higher risk of water-borne diseases

Source: European Parliament

Work assignment:

1. Understand and discuss the graphics in the group!
2. At the end, one person briefly presents your findings on the following questions:
 - What is the core message of the graphics? How do the graphics relate to each other?
 - What could be the consequences of the development shown for Europe?